

# Product data sheet

Specifications



## discrete output module Modicon Premium - 16 O solid state

TSXDSY16S4

⚠ Discontinued on: Dec 2, 2020

⚠ To be end-of-service on: Dec 31, 2026

⚠ Discontinued - Service only

**Product availability: Non-Stock - Not normally stocked in distribution facility**

### Main

Range of Product	Modicon Premium Automation platform
Product or Component Type	Discrete output module
Discrete output number	16
Discrete output type	Triac not protected
Discrete output voltage	24...120 V AC EN/IEC 61131-2 20...132 V

### Complementary

Current per channel	1 A
Maximum current per module	12 A
Response time	< 10 ms (activation) < 10 ms (deactivation)
Output overvoltage protection	Ge-Mov
Output overload protection	10 A, non interchangeable fireproof protection
Short-circuit protection	10 A, non interchangeable fireproof protection
Isolation resistance	> 10 MOhm 500 V
Power dissipation	(0.85 W + 1 W x No of outputs x current per module)
Marking	CE
Electrical connection	Screw terminal block
Current consumption	220 mA 5 V DC
Module format	Standard
Net Weight	0.84 lb(US) (0.38 kg)

### Environment

Dielectric strength	2000 V 50/60 Hz 60 s
Standards	73/23/EEC 93/68/EEC CSA C22.2 No 142 89/336/EEC IEC 61131-2 UL 508 CSA C22.2 No 213 Class I Division 2 Group B CSA C22.2 No 213 Class I Division 2 Group A CSA C22.2 No 213 Class I Division 2 Group D CSA C22.2 No 213 Class I Division 2 Group C 92/31/EEC

Price is "List Price" and may be subject to a trade discount – check with your local distributor or retailer for actual price.

Disclaimer: This documentation is not intended as a substitute for and is not to be used for determining suitability or reliability of these products for specific user applications

Product Certifications	BV LR ABS RMRS GL DNV RINA
Ambient Air Temperature for Operation	32...140 °F (0...60 °C)
Ambient Air Temperature for Storage	-13...158 °F (-25...70 °C)
Relative Humidity	10...95 % without condensation for operation 5...95 % without condensation for storage
Operating altitude	0...6561.68 ft (0...2000 m)
Protective treatment	TC
IP Degree of Protection	IP20
Pollution degree	2

## Ordering and shipping details

Category	US1PC2222558
Discount Schedule	PC22
GTIN	3389110725841
Returnability	No

## Packing Units

Unit Type of Package 1	PCE
Nbr. of units in pkg.	1
Package 1 Height	2.2 in (5.5 cm)
Package 1 Width	7.09 in (18.0 cm)
Package 1 Length	10.2 in (26.0 cm)
Package weight(Lbs)	19.7 oz (558.0 g)

## Contractual warranty

Warranty (in months)	18
----------------------	----



## Environmental Data

Schneider Electric aims to achieve Net Zero status by 2050 through supply chain partnerships, lower impact materials, and circularity via our ongoing “Use Better, Use Longer, Use Again” campaign to extend product lifetimes and recyclability.

[Environmental Data explained >](#)

[How we assess product sustainability >](#)

### Use Better

Materials and Substances	
California proposition 65	<b>WARNING:</b> This product can expose you to chemicals including: Lead and lead compounds which is known to the State of California to cause cancer and birth defects or other reproductive harm. For more information go to <a href="http://www.p65warnings.ca.gov">www.p65warnings.ca.gov</a>

### Use Longer

Lifetime extension	
Repair	No

Dimensions Drawings

Standard and Extendable Racks for Modules Mounting

Dimensions of Modules and Racks

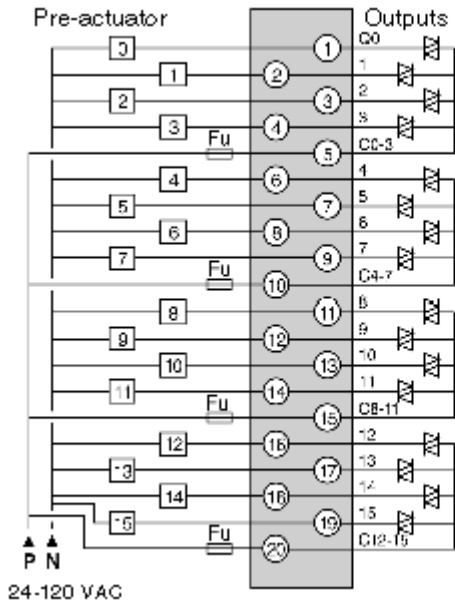


- (1) With screw terminal block modules.
- (2) Maximum depth for all types of modules and their associated connectors.

Connections and Schema

Discrete Bidirectional Triode Thyristor Output 16-Channel Module

Wiring Diagram



FU 6.3 A quick-blow fuse