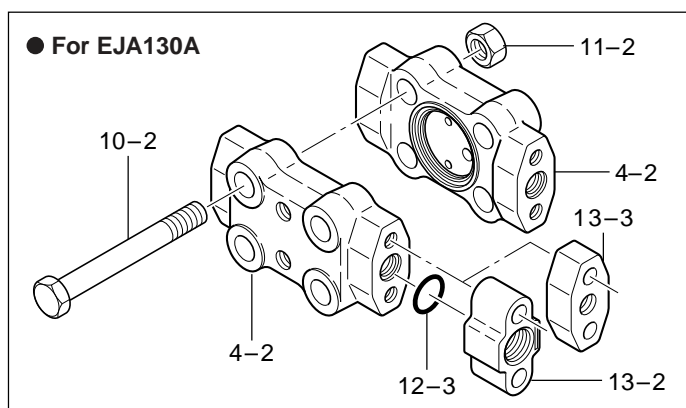
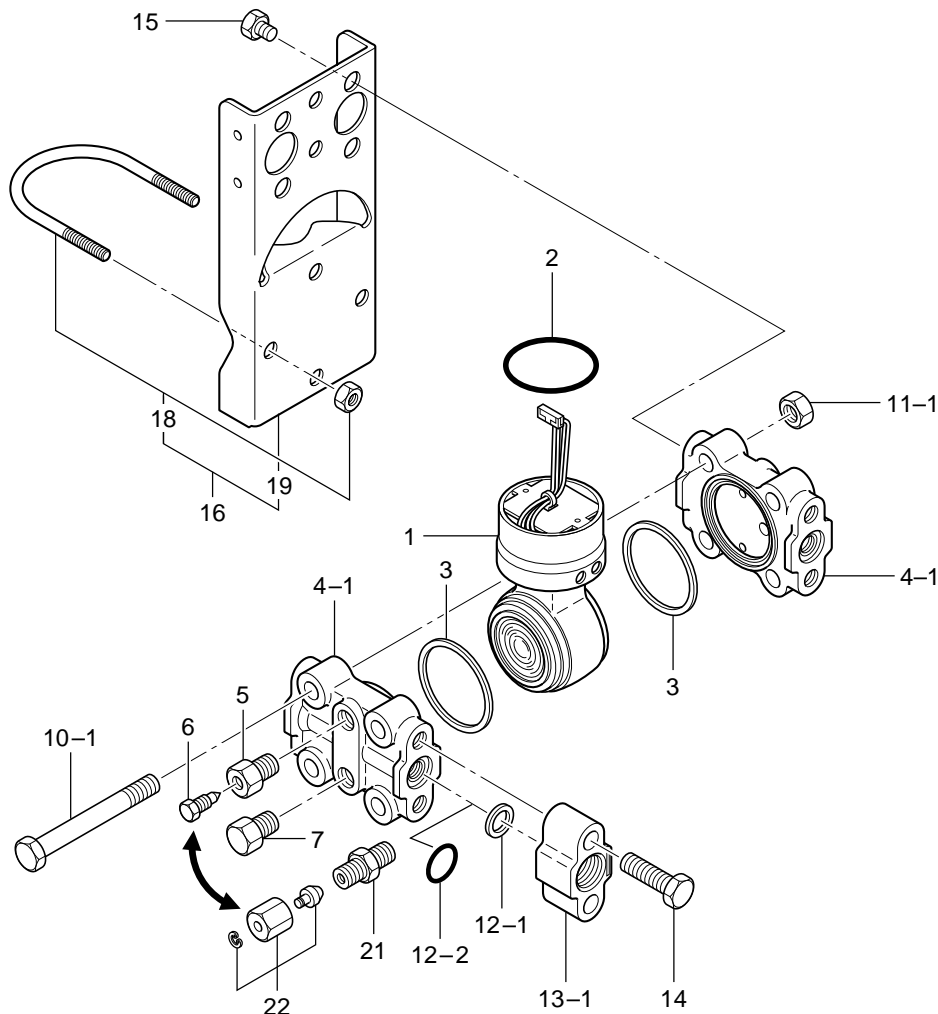


# Customer Maintenance Parts List

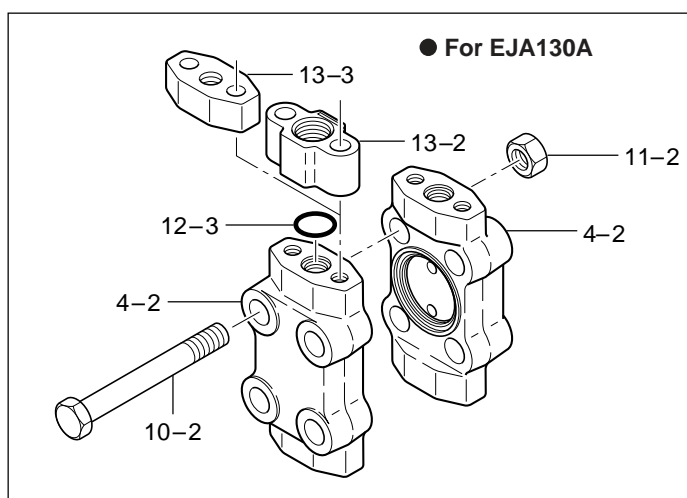
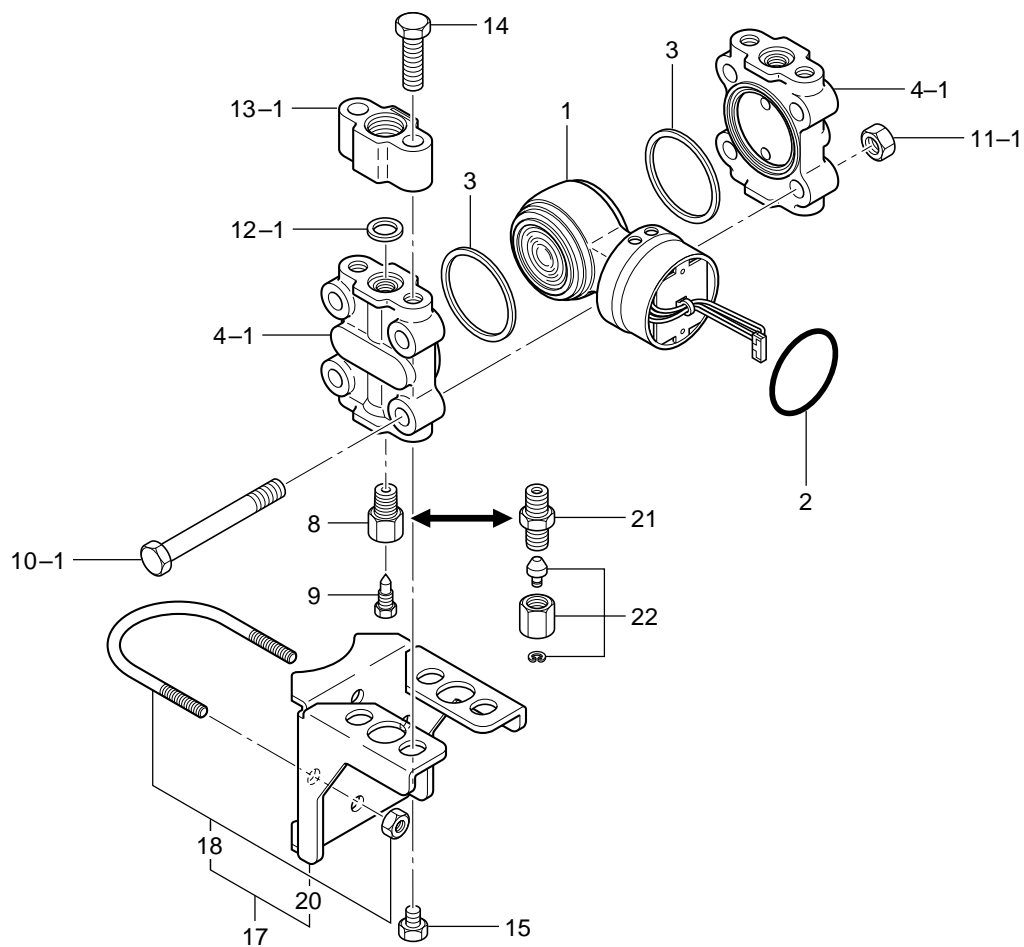
Model EJA110A, EJA120A and EJA130A  
Differential Pressure Transmitter  
(Pressure-detector Section)

**DP** *harp*

## Horizontal Impulse Piping Type



### Vertical Impulse Piping Type



Item	Part No.	Qty	Description
1	—	1	Capsule Assembly (see Table 1, Table 2 and Table 3 on page 5) (Note 1)
2	F9300AJ	1	O-Ring
3	Below	2	Gasket
	F9340GA		Teflon-coated SUS316L Stainless Steel } (for EJA110A with Wetted
	F9340GC		Teflon-coated SUS316L Stainless Steel (degreased) } Parts Material code S)
	F9340GE		PTFE Teflon } (for EJA110A with Wetted Parts Material
	F9340GF		PTFE Teflon (degreased) } code H, M, T, A, D and B and EJA120A)
	F9300FD		Teflon-coated SUS316L Stainless Steel
	F9300FR		Teflon-coated SUS316L Stainless Steel (degreased) } (for EJA130A)
4-1	Below	2	Cover Flange for EJA110A and EJA120A (Note 2)
	F9340VA		Rc 1/4 } SCS14A Stainless Steel (for EJA110A with Wetted Parts Material code S)
	F9340VB		1/4 NPT } For Horizontal Impulse Piping Type
	F9340VC		Rc 1/4 } SCS14A Stainless Steel (for EJA110A with Wetted Parts Material code S)
	F9340VD		1/4 NPT } For Vertical Impulse Piping Type
	F9340VP		Rc 1/4 } SCS14A Stainless Steel (for EJA110A with Wetted Parts Material code H, M and T
			and EJA120A) For Horizontal Impulse Piping Type
	F9340VR		1/4 NPT } SCS14A Stainless Steel (for EJA110A with Wetted Parts Material code H, M and T
	F9340VN		Rc 1/4 } and EJA120A) For Vertical Impulse Piping Type
	F9340VQ		1/4 NPT } Hastelloy C-276 equivalent (for EJA110A with Wetted Parts Material code A and D)
	F9340VS		Rc 1/4 } For Horizontal Impulse Piping Type
	F9340VT		1/4 NPT } Hastelloy C-276 equivalent (for EJA110A with Wetted Parts Material code A and D)
			Rc 1/4 } For Vertical Impulse Piping Type
	F9340VU		1/4 NPT } Monel equivalent (for EJA110A with Wetted Parts Material code B)
	F9340VV		Rc 1/4 } For Horizontal Impulse Piping Type
	F9340TP		1/4 NPT } Monel equivalent (for EJA110A with Wetted Parts Material code B)
	F9340TR		Rc 1/4 } For Horizontal Impulse Piping Type
	F9340TN		1/4 NPT } For Vertical Impulse Piping Type
4-2	F9340TQ		1/4 NPT } Cover Flange for EJA130A (Note 2)
	Below	2	Rc 1/4 SUS316 Stainless Steel (for Horizontal Impulse Piping Type)
	F9340UA		Rc 1/4 SUS316 Stainless Steel (for Vertical Impulse Piping Type)
	F9340UC		1/4 NPT SUS316 Stainless Steel (for Horizontal Impulse Piping Type)
	F9340UH		1/4 NPT SUS316 Stainless Steel (for Vertical Impulse Piping Type)
5	F9340UJ		1/4 NPT SUS316 Stainless Steel (for Vertical Impulse Piping Type)
	Below	2	Vent Plug
	F9340SA		R 1/4 } SUS316 Stainless Steel (for EJA110A with Wetted Parts
	F9340SB		1/4 NPT } Material code S, H, M and T, EJA120A and EJA130A)
	F9340SE		R 1/4 } Hastelloy C-276 (for EJA110A with Wetted Parts Material code A and D)
			1/4 NPT } Monel (for EJA110A with Wetted Parts Material code B)
	F9340SF		R 1/4 }
	F9340SS		1/4 NPT }
	F9340ST		1/4 NPT }
6	Below	2	Vent Screw
	D0114PB		SUS316 Stainless Steel (for Models except EJA110A with Wetted Parts Material codes A, D and B)
	F9340SK		Hastelloy C-276 (for EJA110A with Wetted Parts Material code A and D)
	F9270HG		Monel (for EJA110A with Wetted Parts Material code B)
7	Below	2	Drain Plug (Note 2)
	F9200CS		R 1/4 } SUS316 Stainless Steel (for EJA110A with Wetted Parts
	D0114RZ		1/4 NPT } Material code S, H, M and T, EJA120A and EJA130A)
			R 1/4 } Hastelloy C-276 (for EJA110A with Wetted Parts Material code A and D)
	F9340SL		1/4 NPT }
	F9340SM		R 1/4 }
	F9340SW		1/4 NPT }
	D0117MS		1/4 NPT }
8	Below	2	Drain/Vent Plug
	F9340SC		R 1/4 } SUS316 Stainless Steel (for EJA110A with Wetted Parts
	F9340SD		1/4 NPT } Material code S, H, M and T, EJA120A and EJA130A)
	F9340SG		R 1/4 } Hastelloy C-276 (for EJA110A with Wetted Parts Material code A and D)
	F9340SH		1/4 NPT }
	F9340SU		R 1/4 } Monel (for EJA110A with Wetted Parts Material code B)
			1/4 NPT }
9	F9340SV		1/4 NPT } Drain/Vent Screw
	Below	2	SUS316 Stainless Steel (for Models except EJA110A with Wetted Parts Material code A, D and B)
	F9270HE		Hastelloy C-276 (for EJA110A with Wetted Parts Material code A and D)
	F9340SJ		Monel (for EJA110A with Wetted Parts Material code B)
	D0117MR		
10-1	Below	4	Bolt (for EJA110A and EJA120A)
	F9340AB		SCM435 Chrome Molybdenum Steel
	F9340AC		SUS630 Stainless Steel
	F9340AQ		SUH660 Stainless Steel
10-2	Below	4	Bolt (for EJA130A)
	F9340AF		SCM435 Chrome Molybdenum Steel
	F9340AG		SUS630 Stainless Steel
	F9340AS		SUH660 Stainless Steel
11-1	Below	4	Nut (for EJA110A and EJA120A)
	F9275KL		SCM435 Chrome Molybdenum Steel
	F9275KH		SUS630 Stainless Steel
	F9340BQ		SUH660 Stainless Steel
11-2	Below	4	Nut (for EJA130A)
	F9300GB		SCM435 Chrome Molybdenum Steel
	F9300GD		SUS630 Stainless Steel
	F9340BS		SUH660 Stainless Steel

Item	Part No.	Qty	Description
12-1	Below D0114RB	2	Gasket (for EJA110A and EJA120A) PTFE Teflon
12-2	Below U0102XC F9340GN	2	PTFE Teflon (degreased) Gasket (for EJA110A and EJA120A with Optional code /N2 and /N3) Fluorinated Rubber
12-3	F9340GP Below F9340GN F9340GP F9202FJ	2	Fluorinated Rubber (degreased) Gasket (for EJA130A) Fluorinated Rubber Fluorinated Rubber (degreased) Glass Reinforced Teflon
13-1	F9201HA Below F9340XY F9340XW F9340XZ	2	Glass Reinforced Teflon (degreased) Process Connector (for EJA110A and EJA120A)(Note 2) Rc 1/4 Rc 1/2 1/4 NPT
	F9340XX F9340WY F9340WW F9340WZ F9340WX		
	F9340TY F9340TW F9340TZ F9340TX		
13-2	Below F9340XT F9340XS	2	Process Connector (for EJA130A with Process connection code 3 and 4)(Note 2) 1/4 NPT 1/2 NPT
13-3	Below F9271FD F9271FC	2	Process Connector (for EJA130A with Process connection code 1 and 2)(Note 2) Rc 1/4 Rc 1/2
14	Below X0100MN F9273DZ F9340AZ	4	Bolt SCM435 Chrome Molybdenum Steel SUS630 Stainless Steel SUH660 Stainless Steel
15	Below F9270AY F9273CZ	4	Bolt S15C Carbon Steel SUS XM7 Stainless Steel
16	Below F9270AW F9300TJ	1	Bracket Assembly (Flat type) SECC Carbon Steel SECC Carbon Steel (for Epoxy resin-baked coating)
17	F9300TA Below F9340EA F9340EB F9340EC	1	SUS304 Stainless Steel Bracket Assembly (L type) SECC Carbon Steel SECC Carbon Steel (for Epoxy resin-baked coating) SUS304 Stainless Steel
18	D0117XL-A	1	U-Bolt/Nut Assembly, SUS304 Stainless Steel
19	Below F9270AX F9300TN F9300TE	1	Bracket (Flat type) SECC Carbon Steel SECC Carbon Steel (for Epoxy resin-baked coating) SUS304 Stainless Steel
20	Below F9340EF F9340EG F9340EM	1	Bracket (L type) SECC Carbon Steel SECC Carbon Steel (for Epoxy resin-baked coating) SUS304 Stainless Steel
21	Below F9275EC F9275ED F9275EE	2	Vent Plug (degreased), SUS316 Stainless Steel R 1/4 1/4 NPT
22		2	Needle Assembly (degreased), SUS316 Stainless Steel

(Note 1) In case of degrease cleansing treatment (Optional code/K1 or K5), consult YOKOGAWA local office.  
(However, see Table 1, Table 2 and Table 3 in case of Optional code/K2 or K6)

(Note 2) In case of degrease cleansing treatment (Optional code/K1, K2, K5 or K6), consult YOKOGAWA local office.

## ■ Capsule Assembly Part Number

### ● EJA110A

Table 1. Capsule Assembly Part Number (Item 1)  
For General-use type, Flameproof type and Intrinsically safe type

Installation of Transmitter	High Pressure Side	Capsule Code	Wetted Parts Material Code				
			S(*1)	S(*2)	H, A	T, D	M, B
Horizontal Impulse Piping Type	Right	L	F9349AA	F9352AA	F9349AE	F9349AJ	F9349AN
		M	F9349BA	F9352BA	F9349BE	F9349BJ	F9349BN
		H	F9349CA	F9352CA	F9349CE	F9349CJ	F9349CN
		V	F9349DA	F9352DA	F9349DE	F9349DJ	F9349DN
	Left	L	F9349AB	F9352AB	F9349AF	F9349AK	F9349AP
		M	F9349BB	F9352BB	F9349BF	F9349BK	F9349BP
		H	F9349CB	F9352CB	F9349CF	F9349CK	F9349CP
		V	F9349DB	F9352DB	F9349DF	F9349DK	F9349DP
Vertical Impulse Piping Type	Right	L	F9349AC	F9352AC	F9349AG	F9349AL	F9349AQ
		M	F9349BC	F9352BC	F9349BG	F9349BL	F9349BQ
		H	F9349CC	F9352CC	F9349CG	F9349CL	F9349CQ
		V	F9349DC	F9352DC	F9349DG	F9349DL	F9349DQ
	Left	L	F9349AD	F9352AD	F9349AH	F9349AM	F9349AR
		M	F9349BD	F9352BD	F9349BH	F9349BM	F9349BR
		H	F9349CD	F9352CD	F9349CH	F9349CM	F9349CR
		V	F9349DD	F9352DD	F9349DH	F9349DM	F9349DR

### ● EJA120A

Table 2. Capsule Assembly Part Number (Item 1)  
For General-use type, Flameproof type and Intrinsically safe type

Installation of Transmitter	High Pressure Side	Capsule Code	Part No. (*1)	Part No. (*2)
Horizontal Impulse Piping Type	Right	E	F9349EA	F9352EA
	Left	E	F9349EB	F9352EB
Vertical Impulse Piping Type	Right	E	F9349EC	F9352EC
	Left	E	F9349ED	F9352ED

### ● EJA130A

Table 3. Capsule Assembly Part Number (Item 1)  
For General-use type, Flameproof type and Intrinsically safe type

Installation of Transmitter	High Pressure Side	Capsule Code	Part No. (*1)	Part No. (*2)
Horizontal Impulse Piping Type	Right	M	F9359AA	F9359EA
		H	F9359BA	F9359FA
	Left	M	F9359AB	F9359EB
		H	F9359BB	F9359FB
Vertical Impulse Piping Type	Right	M	F9359AC	F9359EC
		H	F9359BC	F9359FC
	Left	M	F9359AD	F9359ED
		H	F9359BD	F9359FD

\*1. Silicone oil filled capsule (Standard)

\*2. Fluorinated oil filled capsule (for oil-prohibited use: Optional code /K2 or K6)